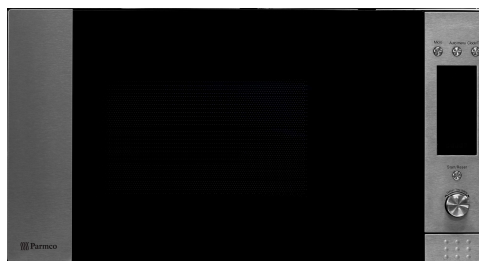




# Installation and Operating Instructions

**Models:**

**MW-1 Microwave**





Dear Valued Customer,

Thank you and congratulations on purchasing your new Parmco appliance.

All Parmco products are made to the highest quality and design standards. We are sure you will enjoy your new appliance.

As a note please read through these instructions carefully as these will assist you in gaining a complete understanding of the functions and features offered by your appliance.

Please take special note of all detailed technical information and installation instructions.

We hope you enjoy your new appliance. If you would like to find out more about this product or any other products in Parmcos' extensive range visit us on the web at [www.parmco.co.nz](http://www.parmco.co.nz).

Regards,  
**The Parmco Team**



**IMPORTANT SAFETY INSTRUCTIONS**  
**READ CAREFULLY AND KEEP FOR FUTURE REFERENCE**

- **WARNING:** when the appliance is operated in the combination mode, children should only use the oven under adult supervision due to the temperatures generated;
- **WARNING:** if the door or door seals are damaged, the oven must not be operated until it has been repaired by a qualified technician. Contact Parmco Appliances on 09 573 5678.
- **WARNING:** it is hazardous for anyone other than a qualified technician to carry out any service or repair operation that involves the removal of a cover which gives protection against exposure to microwave energy.
- **WARNING:** liquids and other foods must not be heated in sealed containers since they are liable to explode.
- Only use utensils that are suitable for use in microwave ovens
- When heating food in plastic or paper containers, keep an eye on the oven due to the possibility of ignition.
- if smoke is observed, unplug the appliance and keep the door closed in order to stifle any flames.
- Microwave heating of beverages can result in delayed eruptive boiling, therefore care must be taken when handling the container.
- the contents of feeding bottles and baby food jars should be stirred or shaken and the temperature checked before consumption, in order to avoid burns.
- Eggs in their shell and whole hard-boiled eggs should not be heated in microwave ovens since they may explode, even after microwave heating has ended.
- The oven should be cleaned regularly and any food deposits removed.
- Failure to maintain the oven in a clean condition could lead to deterioration of the surface that could adversely affect the life of the appliance and possibly result in a hazardous situation.
- If the supply cord is damaged, it must be replaced by Parmco Appliances, contact Parmco on 09 573 5678 to arrange.
- The temperature of accessible surfaces may be high when the appliance is operating.

## BEFORE YOU CALL FOR SERVICE

If the oven will not perform at all, the display does not appear or the display disappears:

- a) Check to ensure that the oven is plugged in securely. If it is not, remove the plug from the outlet, wait 10 seconds and plug it in again securely.
- b) Check the premises for a blown circuit fuse or a tripped main circuit breaker. If these seem to be operating properly, test the outlet with another appliance.

2. If the microwave power does not function:

- a) Check to see whether the timer is set.
- b) Check to make sure that the door is securely closed to engage the safety interlocks. Otherwise, the microwave energy will not flow into the oven.

**IF NONE OF THE ABOVE RECTIFIES THE SITUATION, THEN  
CONTACT PARMCO APPLIANCES ON 09 573 5678**

## RADIO INTERFERENCE

Microwave ovens may cause interference to your radio, TV, or similar equipment. When interference occurs, it may be eliminated or reduced by the following procedures.

- a. Clean the door and sealing surface of the oven.
- b. Place the radio, TV, etc. as far away from your microwave oven as possible.
- c. Use a properly installed antenna for your radio, TV, etc. to get a strong signal reception.

Note:

The appliance is for household use for heating food and beverages using electromagnetic energy and for indoor use only.

## SPECIFICATIONS

Power consumption:	240V~50Hz,1450W
Output:	900W
Operating Frequency:	2,450MHz
Outside Dimensions:	520mm(W) X 430mm(D) X 300mm(H)
Oven Cavity Dimensions:	350mm(W) X 372mm(D) X 232mm(H)
Oven Capacity:	30litres
Uncrated Weight:	Approx. 17.5kg

## INSTALLATION

1. Make sure all the packaging materials are removed from the inside of the door.
  2. Inspect the oven after unpacking for any visual damage such as:  
Misaligned Door  
Damaged Door  
Dents or Holes in Door Window or Screen  
Dents in the Cavity  
If any of the above are visible, DO NOT use the Oven, contact Parmco Appliances on 09573 5678
  3. This Microwave Oven weighs 18.5 kg and must be placed on a horizontal surface strong enough to sustain such weight.
  4. The oven must be placed away from high temperature and steam.
  5. DO NOT place anything on top of the oven.
  6. DO NOT remove the turn -table drive shaft.
  7. As with any appliance, close supervision is necessary when used by children.
- CAUTION: This oven is protected internally by ac 250V, 10 Amp Fuse.

## WARNING-THIS APPLIANCE MUST BE EARTHED

1. The plug socket should be within easy reach of the power cord
  2. This oven requires 1.5 KVA for its input. consultation with service engineer is suggested when installing the oven.
- CAUTION: This oven is protected internally by ac 250V, 10 Amp Fuse.

## IMPORTANT

The wires in this mains lead are coloured in accordance with the following code:

Green-and-yellow : Earth  
Blue : Neutral  
Brown : Live

As the colours of the wires in the mains leads of the appliance may not correspond with the coloured markings identifying the terminals in your plug, proceed as follows:

The wire which is coloured green-and-yellow must be connected to the terminal in the plug which is marked with the letter E or by the earth symbol coloured green of green-and-yellow.

The wire which is coloured blue must be connected to the terminal which is marked with the letter N or coloured black.

The wire which is coloured brown must be connected to the terminal which is marked with the letter L or coloured red.

## IMPORTANT SAFETY INSTRUCTIONS

- WARNING: When the appliance is operated in the combination mode, children should only use the oven under ] adult supervision due to the temperatures generated.
- WARNING: If the door or door seals are damaged, the oven must not be operated until it has been repaired by a competent person. Please contact Parmco Appliances on 09 573 5678.
- WARNING: It is hazardous for anyone other than a qualified technician to carry out any service or repair operation that involves the removal of a cover which gives protection against exposure to microwave energy.  
DO NOT open this cover. Contact Parmco Appliances.
- WARNING: liquids and other foods must not be heated in sealed containers since they are liable to explode when opening after heating.
- Don't remove oven's feet and do not block the air vents into the oven.
- Only use utensils that are suitable for use in microwave ovens.
- Please take care when heating food in plastic or paper containers as these may reach extreme temperatures left unchecked.
- If smoke is observed, switch off or unplug the appliance and keep the door closed in order to stifle any flames;
- Microwave heating of beverages can result in delayed eruptive boiling, therefore care must be taken when handling the container.
- The contents of feeding bottles and baby food jars should be stirred or shaken and the temperature checked before consumption, in order to avoid burns.
- Eggs in their shell and whole hard-boiled eggs should not be heated in microwave ovens since they may explode, even after microwave heating has ended.
- When cleaning the surfaces of the door, door seal or cavity of the oven, use only mild, nonabrasive soaps, or detergents applied with a sponge or soft cloth.
- The oven should be cleaned regularly and any food deposits removed;
- Failure to maintain the oven in a clean condition could lead to deterioration of the surface that could adversely affect the life of the appliance and possibly result in a hazardous situation.
- If the supply cord is damaged, it must be replaced by Parmco Appliances. Contact Parmco on 09 573 5678 to arrange

## SAFETY INSTRUCTIONS FOR GENERAL USE

Listed below are, as with all appliances, certain rules to follow and safeguards to assure top performance from this microwave:

1. Always have the glass tray, roller arms, coupling and roller track in place when operating the oven.
2. Do not use the oven for any reason other than food preparation, such as for drying clothes, paper, or any other non-food items, or for sterilising purposes.
3. Do not operate the oven when empty. This could damage the oven.
4. Do not use the oven cavity for any type of storage, such as papers, cookbooks, etc.
5. Do not cook any food surrounded by a membrane, such as egg yolks, potatoes, chicken livers, etc without first being pierced several times with a fork.
6. Do not insert any object into the openings on the outer case.
7. Do not at any time remove parts from the oven such as the feet, coupling, screws, etc.
8. Do not cook food directly on the glass tray. Place food in/on proper cooking utensil before placing in the oven.

### 9. IMPORTANT-COOKWARE NOT TO USE IN YOUR MICROWAVE OVEN

Do not use metal pans or dishes with metal handles.

Do not use anything with metal trim.

Do not use paper covered wire twist-ties on plastic bags.

Do not use melamine dishes as they contain a material which will absorb microwave energy. This may cause the dishes to crack or char and will slow down the cooking speed.

Do not use Centura Tableware. The glaze is not suitable for microwave use.

Corelle Livingware closed handle cups should not be used.

Do not cook in a container with a restricted opening, such as a pop bottle or salad oil bottle, as they may explode if heated in a microwave oven.

Do not use conventional meat or candy thermometers. There are thermometers available specifically for microwave cooking. These may be used.

10. Microwave utensils should be used only in accordance with manufacturer's instructions.

11. Do not attempt to deep-fry foods in this oven.

12. Please remember that a microwave oven only heats the liquid in a container rather than the container itself. Therefore, even though the lid of a container is not hot to the touch when removed from the oven, please remember that the food/liquid inside will be releasing the same amount of steam and/or spitting when the lid is removed as in conventional cooking.

13. Always test the temperature of cooked food yourself especially if you are heating or cooking food/liquid for babies. It is advisable never to consume food/liquid straight from the oven but allow it to stand for a few minutes and stir food/liquid to distribute heat evenly.

14. Food containing a mixture of fat and water, e.g. stock, should stand for 30-60 seconds in the oven after it has been turned off. This is to allow the mixture to settle and to prevent bubbling when a spoon is placed in the food/liquid or a stock cube is added.

15. When preparing/cooking food/liquid and remember that there are certain foods, e.g. Christmas puddings, jam and mincemeat, which heat up very quickly. When heating or cooking foods with a high fat or sugar content do not use plastic containers.

16. Cooking utensil may become hot because of heat transferred from the heated food. This is especially true if plastic wrap has been covering the top and handles of the utensil. Potholders may be needed to handle the utensil.

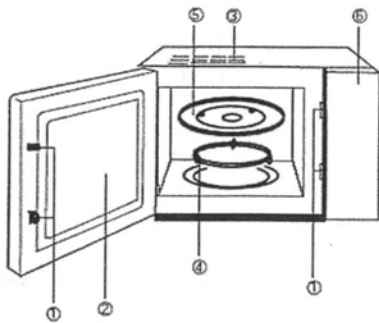
17. To reduce the risk of fire in the oven cavity:

(a) Do not overcook food. Carefully attend microwave oven if paper, plastic, or other combustible materials are placed inside the oven to facilitate cooking.

(b) Remove wire twist-ties from bags before placing bag in oven.

(c) If materials inside the oven should ignite, keep oven door closed, turn the oven off at the wall switch, or shut off power at the fuse or circuit breaker panel.

FEATURE DIAGRAM



(1) Door Safety Lock System

(2) Oven Window

(3) Oven Air Vent

(4) Roller Ring

(5) Glass Tray

(6) Control Panel

#### 1. Single Button Heating

With the press of a single button you can heat everyday items quickly and conveniently.

E.g

Heating a glass of Milk

1. Place glass on turn table, and close the oven door
2. Press the "start/reset" button, the microwave will heat at 100% for 1 minute
3. You will hear 5 beeps upon completion of the heating cycle

#### 2. Microwave Heating

This function has two options

##### 1) Quick microwave heating at 100% power

Example – heating food for 5 minutes

- a) Set time to 5:00
- b) Press "start/reset" button

##### 2) Manual Operation Microwave Heating

Example: Heating food on 70% power for 10:00

- a) Press "Micro/Grill/Combi" button and then select 70% power
- b) Set time to 10:00
- c) Press "start/reset"

There are 5 power levels and the longest microwave heating time is 60 minutes.

Touching times	Microwave power	Display
1	100%	P100
2	70%	P70
3	50%	P50
4	30%	P30
5	10%	P10



### 3.Auto weight defrost

Select the food weight, the microwave will automatically adjust the power level and time.

Example: defrost 0.5kg frozen meat.

- Rotate the knob "Defrost/Time Setting" to choose "0.1"
- Rotate the knob "Defrost/Time Setting" to set the weight 0.5
- Press "Start/Reset" ..

NOTE: The weight of meat must be less than 2 kg

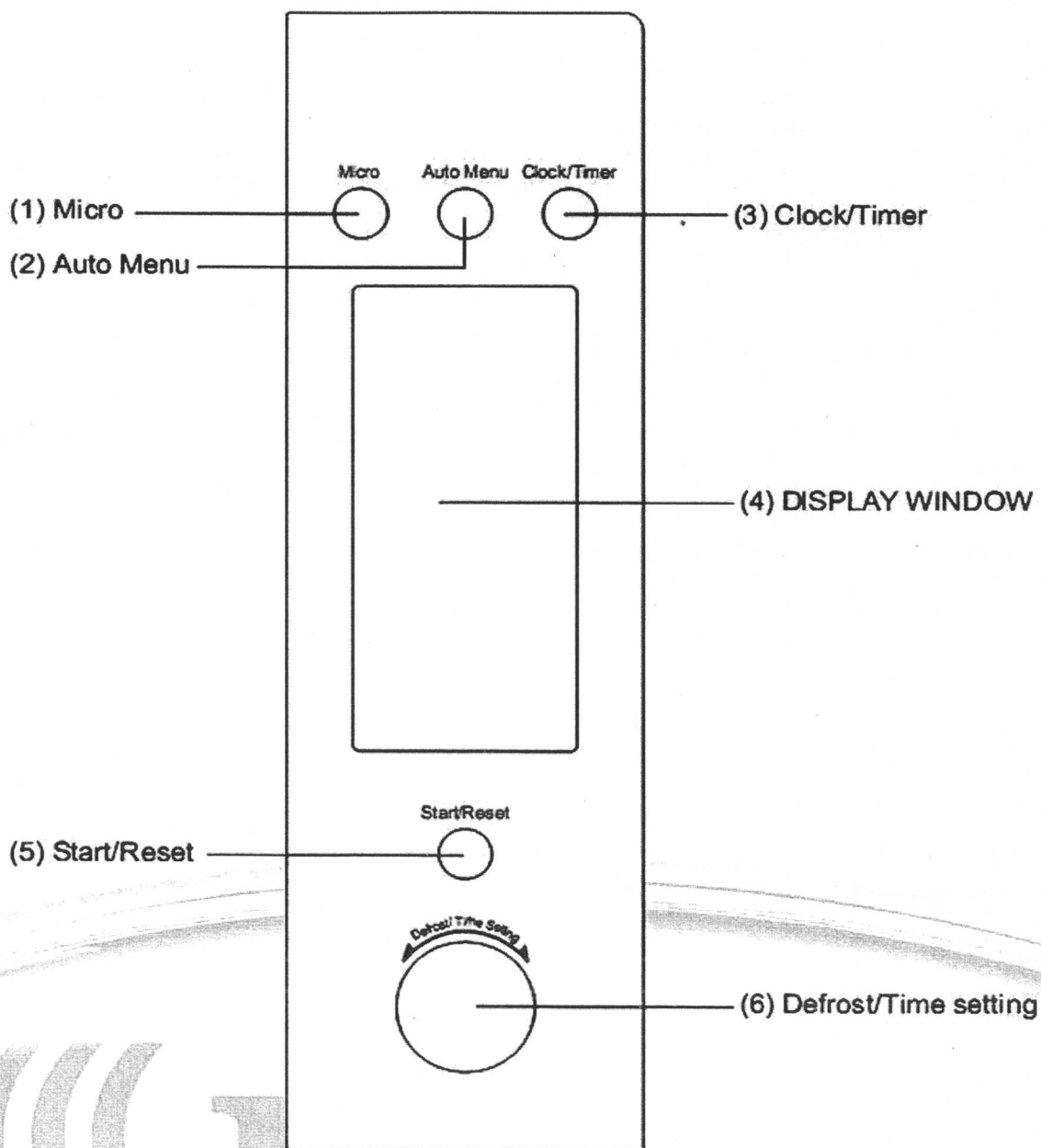
### 4.Auto-Menu

You only need to select the food type and weight, the microwave will help you by automatically adjusting the power and time.

Example: Auto cooking 0.4 kg fish

- Press "Auto Menu" button until "A-5" displayed.
- Rotate the knob "Defrost/Time Setting" to set the weight 0.4kg.
- Press "Start/Reset"

## CONTROL PANEL





# AUTO MENU TABLE

kg

Weight Touching Times	Menu	Rice (A-1)	Vegetable (A-2)	Meat (A-3)	Noodles (A-4)	Fish (A-5)	Reheat (A-6)
1		0.1	0.1	0.2	1	0.1	0.1
2		0.2	0.2	0.3	2	0.2	0.2
3		0.3	0.3	0.4		0.3	0.3
4		0.4	0.4	0.5		0.4	0.4
5		0.5	0.5	0.6		0.5	0.5
6			0.6	0.8		0.6	0.6
7				1.0		0.8	
8						0.9	
9						1.0	

## 5.Clock

The oven has a 24-hour digital clock,

To input the time, for example to 4:30pm:

- Press "Clock/Time", the display will flash, adjust the hour with the knob "Defrost/Time Setting"
- Press "Clock/Time" again, adjust the minute with buttons "Defrost/Time Setting".
- Press "Clock/Time" again and the clock will be set.
- If you want to change the time, repeat above procedure.

## 6.Timer

This allows you to set the microwave oven start and finish cooking at pre-set time.

The clock must be set before you use this feature.

Example: The current time is 16:30 and you want to start cooking at 18:15 on 70% power for 10 minutes:

- Rotate the knob "Defrost/Time Setting", set the time to "18:15" (same procedure as setting clock)
- Press "Micro" to select 70% power.
- Set cooking time for 10 minutes.
- Press "Start/Reset"

If you do not set the power and cooking time and directly press the start button once you have programmed the time, the appliance will only work as a clock.

At 18:15 there will be 10 bleeps and the appliance will be switched off.

## 7. Child-safety-lock .

To activate the child safety lock, press "Auto menu" and "Clock/Timer" at the same time for 2 seconds.

Press "Auto menu" and "clock/Timer" at the same time for 2 seconds again, it will unlock the machine.

## 8. Start/Reset

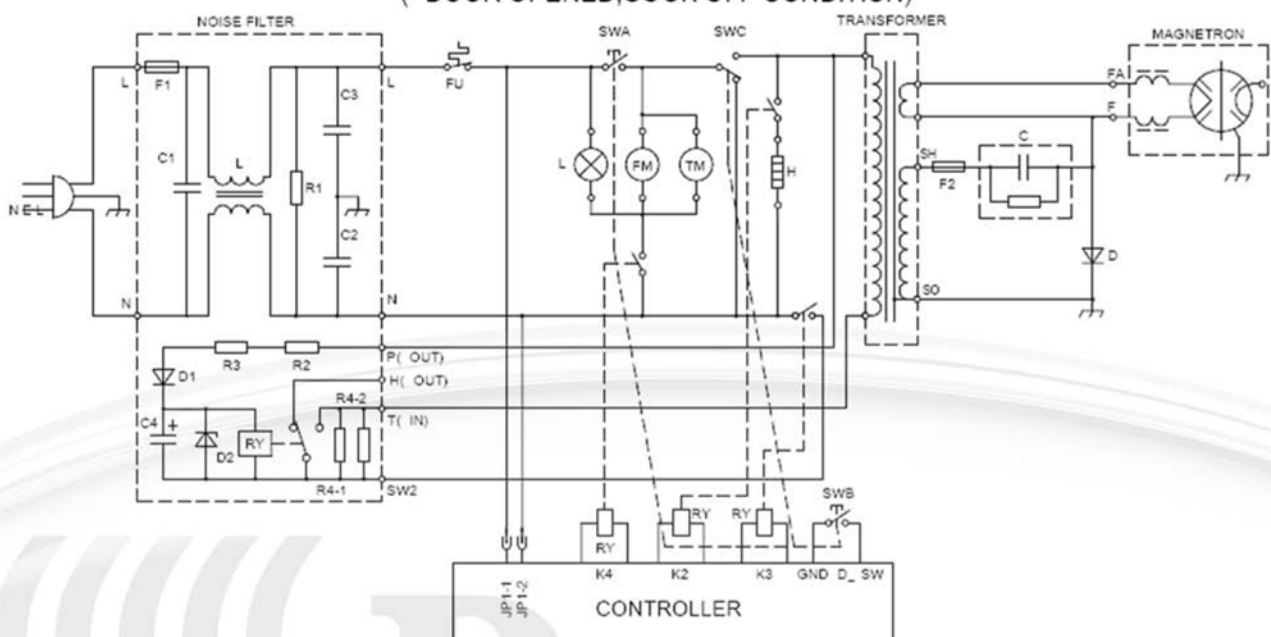
- In the course of operation, pressing "Start/Reset" button will stop operation.
- If any program was set before pressing start, pressing this button will cancel all the set program.



## CARE OF YOUR MICROWAVE OVEN

1. Turn the oven off and remove the power plug from the wall socket before cleaning.
  2. Keep the inside of the oven clean. When food splatters or spilled liquids adhere to oven walls, wipe with a damp cloth. The use of harsh detergent or abrasives is not recommended.
  3. The outside oven surface should be cleaned with a damp cloth. To prevent damage to the operating parts inside the oven, water should not be allowed to seep into the ventilation openings.
  4. Do not allow the Control Panel to become wet. Clean with a soft, damp cloth. Do not use detergents, abrasives or spray-on cleaners on the control Panel.
  5. If steam accumulates inside or around the outside of the oven door, wipe with a soft cloth. This may occur when the microwave oven is operated under high humidity conditions and in no way indicates malfunction of the unit.
  6. It is occasionally necessary to remove the glass tray for cleaning. Wash the tray in warm sudsy water or in a dishwasher.
  7. The roller ring and oven cavity floor should be cleaned regularly to avoid excessive noise. Simply wipe the bottom surface of the oven with mild detergent, water or window cleaner and dry. The roller ring may be washed in mild sudsy water or dish washer. Cooking vapour collect during repeated use but in no way affect the bottom surface or roller ring wheels.
- When removing the roller ring from cavity floor for cleaning, be sure to replace it in the proper position.
8. Remove odors from your oven by combining a cup of water with the juice and skin of one lemon in a deep microwaveable bowl. Microwave for 5 minutes, wipe thoroughly and dry with a soft cloth.

**SCHEMATIC DIAGRAM**  
( DOOR OPENED, COOK OFF CONDITION)



SWA: PRIMARY INTERLOCK SWITCH  
SWB: SECONDARY INTERLOCK SWITCH  
SWC: THE MONITOR INTERLOCK SWITCH

L: LAMP  
FM: FAN MOTOR  
TM: TURNTABLE MOTOR  
H: HEATER

\*CIRCUIT SUBJECT TO CHANGE WITHOUT NOTICE



# PARMCO

Kitchen  
Cooking



Dish  
Washers



Kitchen  
Waste



Kitchen  
Ventilation



Kitchen  
Essentials



## *Parmco Appliances*

### *two year warranty*



#### The Warranty:

- Subject to the terms and conditions contained within this warranty, if the product is not of Acceptable Quality (as defined in the Consumer Guarantees Act) within 2 years of the date of original purchase, then Parmco Sales undertakes to repair or, at its sole discretion, replace the product.
- The warranty does not cover the costs of transport, mileage or travelling time if the product is located beyond 30km of a recognised Service Agent.
- This warranty is offered as an extra benefit, and does not affect other legal rights, which can not be modified or excluded by agreement.
- This warranty only applies to goods supplied and installed in the North and South Islands of New Zealand.
- The provisions of this warranty are in addition to the rights and remedies available to consumers under the Consumer Guarantees Act 1993.

#### The Warranty is not valid:

- If the product is not installed and operated in accordance with the operating instructions.
- If the product is not installed to comply with the electrical, gas, plumbing and other Regulations and Codes of Practice in New Zealand.
- If the product is operated on voltages or frequencies outside the normal range for domestic appliances in New Zealand.
- If the product is not used in normal domestic use, or if it is used in a business as defined in the Consumer Guarantees Act.
- If any serial number has been removed or defaced.
- If proof of date of purchase is not supplied, except at the sole discretion of Parmco Sales. Proof of purchase can be for the product itself, or if installed with a kitchen or house then proof of purchase can be from a Parmco reseller of products supplied by Parmco.

#### Liability under this warranty will not be accepted for:

- Wear and tear from normal domestic use.
- Damage in transport.
- Damage caused to the product by neglect, abuse, negligence, wilful act or misuse.
- Any defect caused by accident, misuse, neglect, tampering with or unauthorised modifications of the appliance or any attempt at internal adjustment or repair by any person other than an Authorised Service Agent.
- Service calls that relate principally to the following:
  - Instruction on how to use the product.
  - Repair or replacement of house fuses, electrical wiring, gas fitting or plumbing.
- Wear and tear caused by normal use of the product.
- Normal or scheduled maintenance including blocked filters or ducting.
- Consumable items such as light bulbs.
- Any damage to ceramic glass hobs caused by spills when cooking.
- Any breakage or damage of glass items.
- Any damage caused by non recommended product used for cleaning, maintaining, lubricating or similar.
- Any aspect relating to the installation of the product, or damage caused during installation.
- Any third party (including reseller) or consequential loss or damage (direct or indirect) however arising.

Product \_\_\_\_\_ Date of Purchase \_\_\_\_\_

Dealer / Retailers Name \_\_\_\_\_

Please retain this Warranty Card together with receipt or other proof of purchase date  
when seeking service during the warranty period.

For your convenience  
we recommend you  
attach proof of  
purchase here



**Physical**

Parmco Appliances  
519 Mt Wellington Highway  
Mt Wellington  
Auckland  
New Zealand

**Postal**

Parmco Appliances  
P.O.Box 51-649  
Pakuranga  
Auckland  
New Zealand  
2140

**Contact**

Phone: +64 9 573 5678  
Fax +64 9 573 5699  
email: [sales@parmco.co.nz](mailto:sales@parmco.co.nz)

**Web**

[www.parmco.co.nz](http://www.parmco.co.nz)

As part of Parmco Appliances commitment to improving and updating product ranges, it reserves the right to alter, change and update, technical specifications and appearance attributes of this and all Parmco Appliances Microwaves and Combination Microwaves.